



 **SHANGHAI KAIQUAN**

KQEA series End Suction Centrifugal Pump

# BRIEF INTRODUCTION OF KAIQAUN GROUP

---

Shanghai Kaiquan Pump (Group) Co., Ltd. is a large comprehensive pump enterprise specializing in design, production and sales of pumps, water-supply facilities and pump control equipments, and it is the leading enterprise in China's pump industry. The Group has more than 5,000 staff members, and 80% of them hold at least college diplomas, of whom are more than 750 engineering technicians consisting of well-known experts, professors, doctors, masters and intermediate & senior engineers nationwide. It has formed the good talented person echelon structure. The Group boasts total assets of 2.5 billion yuan, seven enterprises and five industrial parks in Shanghai, Zhejiang, Hebei, Liaoning and Anhui, covering a total area of nearly 1,000 mu, and a building area of 350,000 square meters for production. It was awarded the following honorable titles: Shanghai Quality Golden Prize, the fourth place in Top 100 Shanghai PVT Enterprise, Shanghai Top 100 Technical Enterprise, Grade AAA China Quality Credit, Grade AAA National Contract Credit, Excellent Enterprise in Quality, Creditability and Services, China's Most Competitive Commodity Trademark, and Advanced Unit of National Enterprise Cultural Construction. In 2013, Kaiquan was selected as Top 500 in mechanical industry for the third consecutive year, leading the first place in the pump industry nationwide.

Shanghai Kaiquan ranks the first in amount of sales in the national pump industry in twelve consecutive years, and the Group's sales volume came to three billion yuan in 2013, nearly one time higher than the enterprise which led the second place. The Group pays attention to the combination of services with technology and business to realize value-added services. Its 300 engineers provide all-around professional solutions for customers, and ERP and CRM systems can response to the customers' demands quickly, with the whole-process control order execution procedure. Moreover, it has established a national service network—32 sales branch companies and 361 agencies. In addition, it carries out the "Blue Fleet Services" and the 4 hour quick reaction mechanism, responding demands of customers at any time. Kaiquan always thinks all for the sake of customers, satisfies the individual needs of customers, and produces the competitive products with reliable performance in pump industry.

In the future, Kaiquan Group will take opportunities and is committed to the localized high-end pump products for the fields such as nuclear power, large-scale fire power, petrochemical engineering, military project and sea water desalination to contribute to the thriving China's pump industry. Moreover, it spares no effort to forge the world famous brand, and intends to become a multinational corporation with the international competitiveness and step into the World Top 10.



# HONORS AND CERTIFICATES



EC-attestation Certificate of LVD



Design and Manufacturing License of Civil Nuclear Safety Facilities



Occupational Health and Safety Management System Certificate

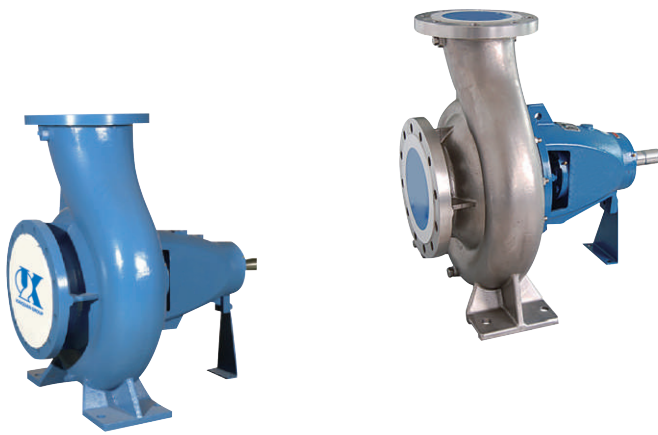


ISO 9001 Quality Management System Certificate



ISO 14001 Environment Management System Certificate

# KQEA SERIES DIN24255/EN 733 STANDARD END SUCTION CENTRIFUGAL PUMPS



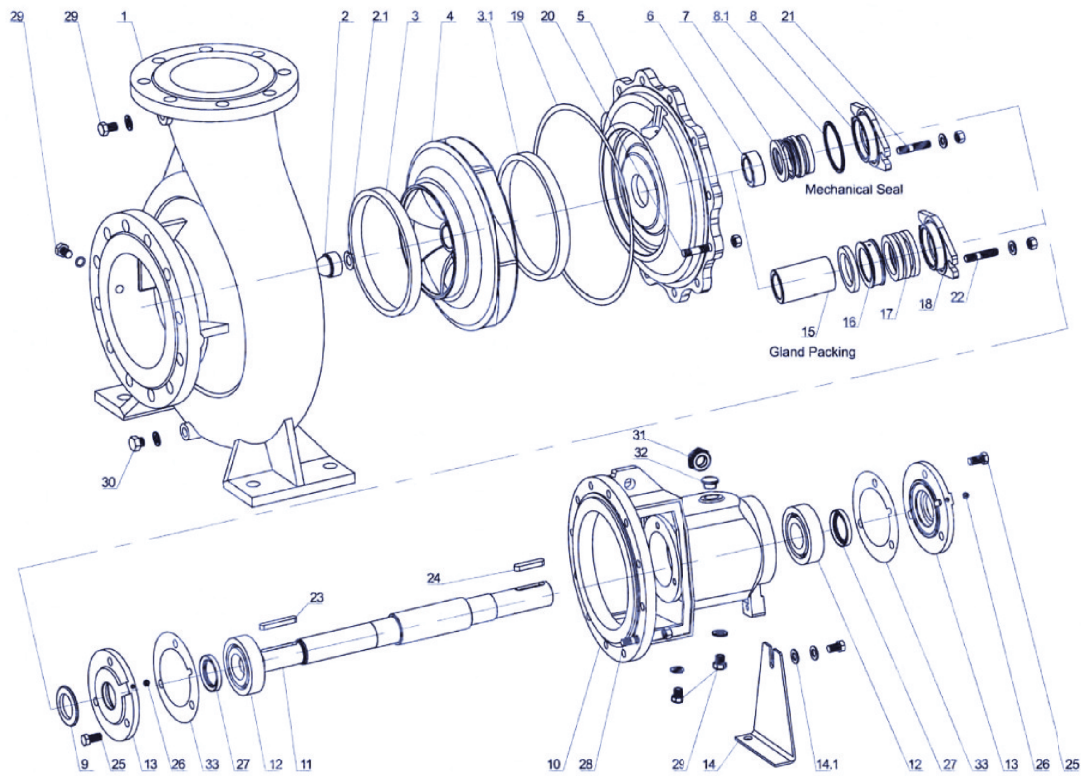
## Application:

- Water supply and drainage
- HVAC and Cooling Tower
- Marine - Ballasting & Bilge
- Booster and Pressurization Set
- Irrigation and agriculture
- Water supply and drainage
- Food and chemical industry  
( with stainless steel material )

Description	Standard	Option	Option	Option
Volute Casing	Cast Iron	Ductile Iron	SS304	SS316
Casing Wear Ring	Cast Iron	Ductile Iron	SS304	SS316
Impeller	Cast Iron	Bronze/ZF Bronze	SS304	SS316
Shaft Sleeve	SS420	SS420	SS304	SS316
Shaft	Carbon Steel	SS420	SS304	SS316
Shaft Seal	Gland Packing	Carbon/Ceramic	Sic/Carbon	Sic/Sic
Flange Drilled	ISO PN10/16	ANIS 125/150Lbs	JIS 10/16K	
Bearing Lub	Greased	Oil		
Sealing	NBR	Viton		

Operating Data:			
Discharge Size	DN32 ~ 300mm	Flow Rate	4 ~1584m <sup>3</sup> /h
Head	2 ~ 150m		
Medium Temperature: -10 ~ 85 °C ( standard )		85 ~ 105 °C ( on special request )	
Working Pressure: ≤1.0MPa ( standard )		≤1.6MPa ( on special request )	

# KQEA SERIES EXPLODE VIEW & LIST OF PARTS

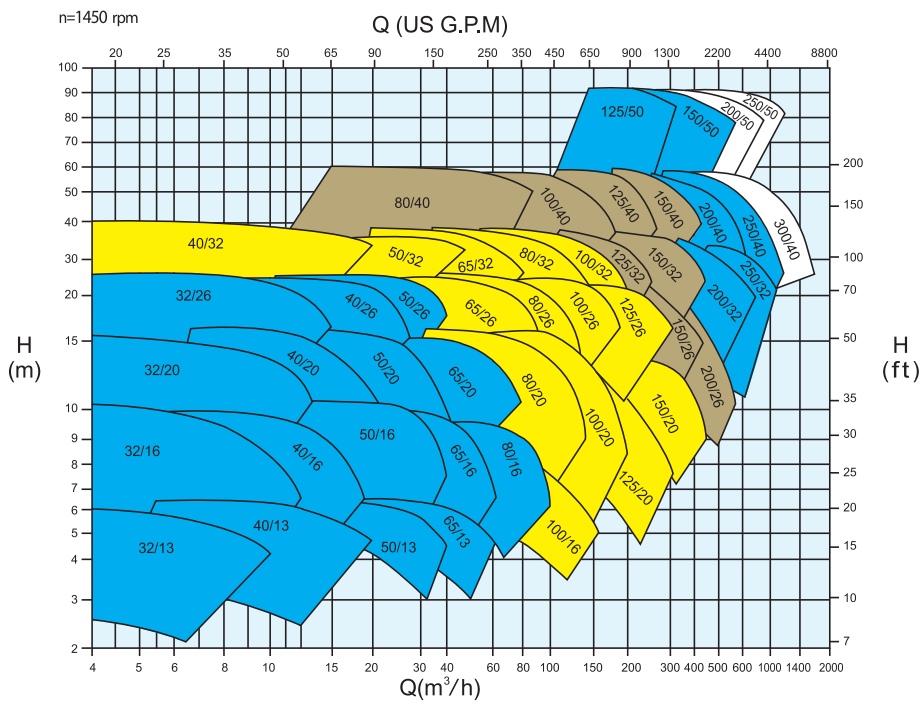
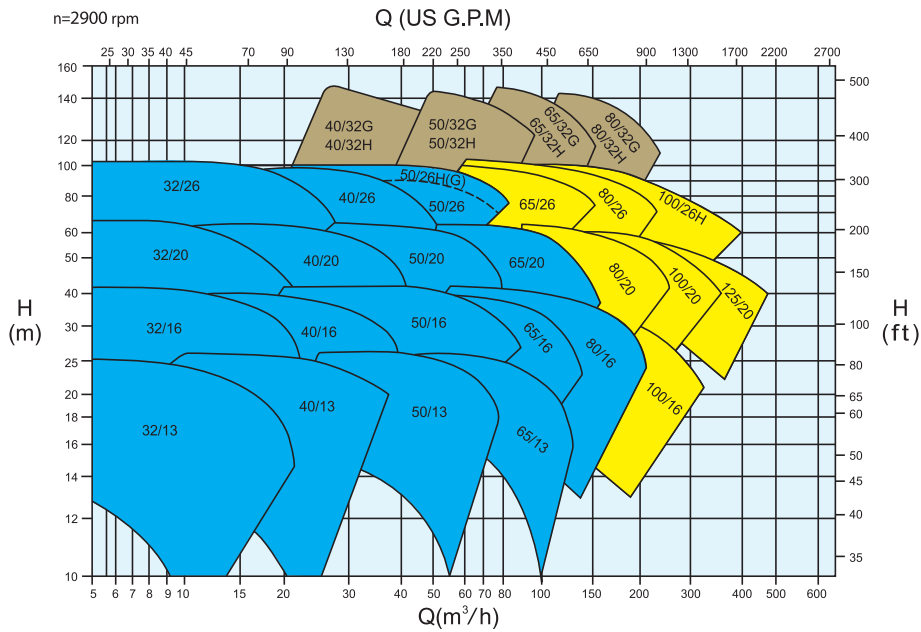


Code	Part Name
1	Casing
2	Impeller Nut
2.1	Lock Washer
3	Wear Ring ( Front )
3.1	Wear Ring ( Back )
4	Impeller
5	Casing Cover
6	Shaft Spacer
7	Mech.Seal
8	Seal Cover
8.1	O - ring
9	Rubber Slinger
10	Bearing Frame

Code	Part Name
11	Shaft
12	Bearing
13	Bearing Cover
14	Support Foot
14.1	Flat Washer
15	Packing Sleeve
16	Packing Seal Cage
	Throat Bushing
17	Gland Packing
18	Gland Cover
19	Casing Gasket
20	Stud Bolt
21	Stud Bolt

Code	Part Name
22	Stud Bolt
23	Key
24	Key
25	Screw Bolt
26	Oil Cup
27	Felting
	Oil Seal
28	Stud Bolt
29	Plug
30	Plug
31	Oil Scale
32	Oil Cover
33	Throat Bushing Gasket

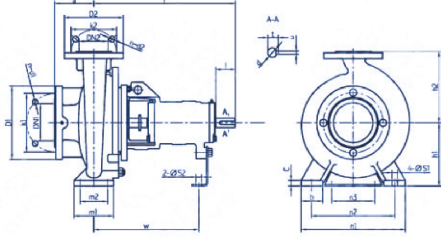
# KQEA SERIES - 50Hz PERFORMANCE



Performance to ISO9906 Grade 2 for clean cold water only

# FLANGE DIMENSIONS

## ( ISO7005.2 DIN2501 PN16 GB/T17241.6 PN1.6 )



DN1 / DN2	32	40	50	65	80	100
D1 / D2	140	150	165	185	200	220
K1 / K2	100	110	125	145	160	180
n-d1 / n-d2	4 - Φ18	4 - Φ18	4 - Φ18	4 - Φ18	8 - Φ18	8 - Φ18

DN1 / DN2	125	150	200	250	300	350
D1 / D2	250	285	340	405	460	520
K1 / K2	210	240	295	355	410	470
n-d1 / n-d2	8 - Φ18	8 - Φ22	12 - Φ22	12 - Φ26	12 - Φ26	16 - Φ26

Model	Bearing Inner Dia.	DN2	DN1	a	f	h1	h2	b	c	n3	m1	m2	n1	n2	s1	s2	w	d	l	t	u	Weight (kg)										
KQEA32/13	25	32	50	80		112	140	50		100	100	70	190	140								29										
KQEA32/16						131	160						240	190								35										
KQEA32/20						160	180															47										
KQEA32/26						180	225						65									58										
KQEA40/13	40	40	50	80		112	140	50		100	100	70	210	160								31										
KQEA40/16						132	160						240	190								34										
KQEA40/20						160	180															45										
KQEA40/26(H)						180	225						65									61										
KQEA40/32	35	40	65	100		200	250	65	14	110	125	95	345	280								94										
KQEA40/32(H)						200	250															107										
KQEA40/32G						526	200						250									105										
KQEA50/13						132	160															35										
KQEA50/16	25	50	65	100		360	160	180	50		100	70	265	212								39										
KQEA50/20						160	200							49																		
KQEA50/26(H)						180	225	65						68																		
KQEA50/26G						526	200	250						65																		
KQEA50/32(H)	35	50	65	125		470	225	280	18		125	95	345	280								113										
KQEA50/32G						526	225	280						105																		
KQEA65/13						160	180							41																		
KQEA65/16						360	160	200					65	14								125	95	280	212	267	24	50	27	8	8	47
KQEA65/20(H)	65	80	80	100		465	180	225	14		125	95	320	250								55										
KQEA65/20G						526	225	280						60																		
KQEA65/26						470	200	250						15																		
KQEA65/32(H)						525	225	280						18																		
KQEA65/32G	45	50	65	125		525	225	280	18		160	120	400	315	18							110										
KQEA80/16						360	180	225					65	14								125	95	320	250	267	24	50	27	8	8	87
KQEA80/20						180	250							18																		
KQEA80/26						200	280							18																		
KQEA80/32(H)	25	80	100	125		250	315		80	16	125	95	400	315								118										
KQEA80/32G						526	250	315						16																		
KQEA80/40						530	280	355					83	18								160	120	440	340	367	42	110	45	12	120	
KQEA100/16						360	180	225					65	14								125	95	320	250	267	24	50	27	8	8	53
KQEA100/20	35	80	100	125		180	250		15		160	120	360	280								76										
KQEA100/26(H)						200	280							95																		
KQEA100/32						250	315							16																		
KQEA100/40						526	250	315						16																		
KQEA125/20	25	80	100	125		530	280	355	83	18	160	120	440	340								130										
KQEA125/26						530	280	355	80	16	370	42	110	45								12	120									
KQEA125/31						200	250	80	15	160	120	400	315	18								342	32	80	35	10	10	117				
KQEA125/40						225	280	80	16	200	150	500	400	23								370	42	110	45	12	12	176				
KQEA150/20	35	100	125	140		250	315		80	16	160	120	400	315								112										
KQEA150/26						250	315							16								342	32	80	35	10	10	117				
KQEA150/31						530	280	355						18								370	42	110	45	12	12	176				
KQEA150/40						315	400							18								370	42	110	45	12	12	178				
KQEA150/50	55	125	150	160		670	355	450	25		200	150	550	450								300										
KQEA200/32						500	280	400						18								342	32	80	35	10	10	132				
KQEA150/26						250	355							18								370	42		45	12	12	163				
KQEA150/32						530	280	400						22								500	48	110	51	14	14	330				
KQEA150/40	45	150	200	180		315	450		20		200	170	600	480								207										
KQEA150/50						670	375	500						22								500	48	110	51	14	14	330				
KQEA200/32						555	315	450						20								392	42		45	12	12	219				
KQEA200/40						670	315	480						20								505	48		51	14	14	286				
KQEA200/50	55	200	250	200		720	425	560	100	22	140	200	150	660	560	23	19	515	60	140	64	18	450									
KQEA250/32						691	355	520	150	26	110	250	200	660	510	28	14	515	60	140	64	18	450									
KQEA250/40						682	400	560	120	32	140	250	190	760	660	30	19	515	60	140	64	18	450									
KQEA250/50						720	450	670	120	30	140	250	190	760	660	30	19	515	60	140	64	18	450									
KQEA300/40	65	250	300	250	720	450	670	120	32	140	250	190	760	660	30	19	515	60	140	64	18	550										
KQEA300/40	65	300	350	300	720	425	670	120	30	140	250	190	760	660	30	19	515	60	140	64	18	550										

[www.kaiquan.com.cn](http://www.kaiquan.com.cn)

SHANGHAI KAIQUAN PUMP (GROUP) CO., LTD.

Add: No.4255 Caoan Road, Shanghai    Post Code: 201804    Service Center: +86-400-002-6600  
Oversea Department: +86-21-56514775    E-mail: [Trading@kaiquan.com.cn](mailto:Trading@kaiquan.com.cn)

